

*Foundation through learning, friendship and fun.*

# School Information Guide



# Index

## SCHOOL INFORMATION:

- Mission, Vision and Values 3
- School Song 4
- School hours 5
- School Calendar 6
- Communication 7
- Contact details and Banking details 8
- Fees 2026 9
- Medication, Clothing, Lunch boxes 10
- Rules, Discipline 11
- Message from the Principal 12



# Mission

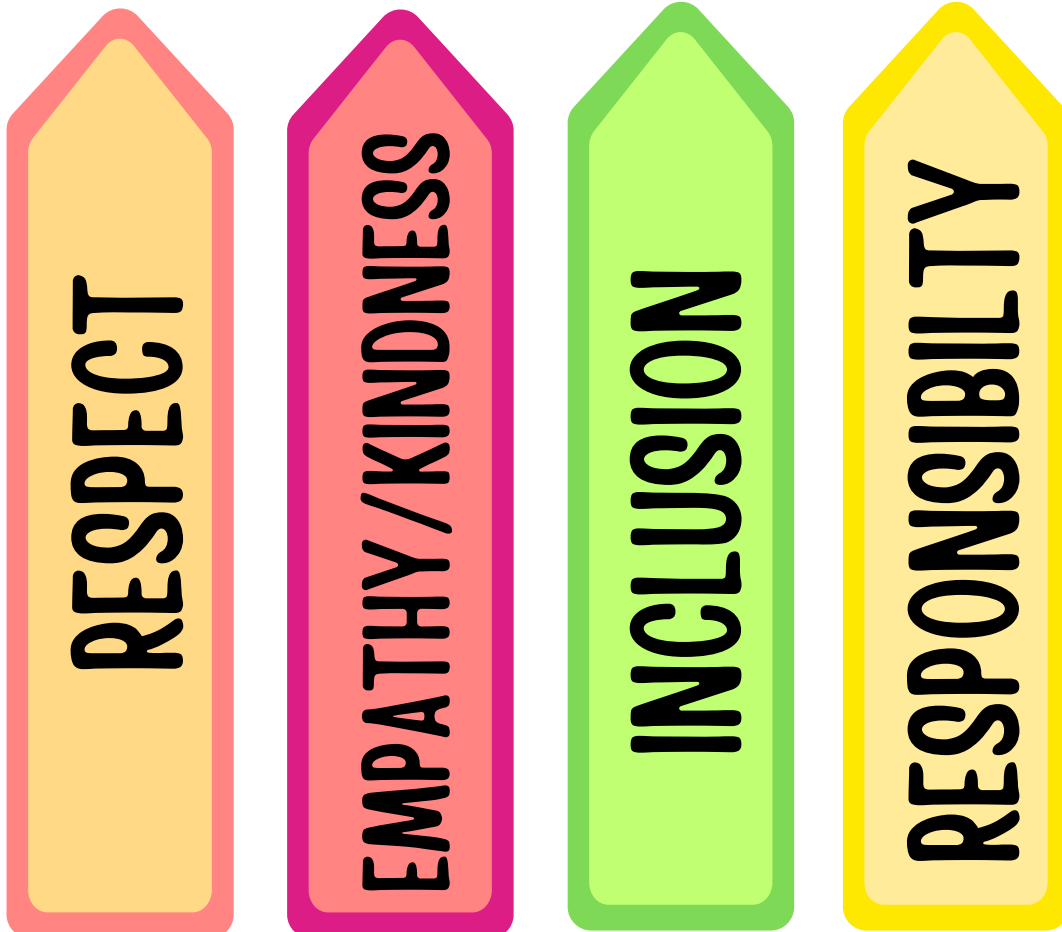
To provide a safe, supportive, and stimulating environment for young children to explore, play, and learn together

# Vision

To create a joyful, nurturing, and inclusive environment where every child's journey begins with a strong foundation built on curiosity, creativity, and kindness.

# Values

Guided by Christian principles, our school promotes integrity, compassion, and respect for the diverse cultures and beliefs that enrich our community.



# School song

There is a school in Overberg,  
where we can work and play.  
Our school is the best in every way,  
and we are loved each day.  
We sing and play and laugh all day,  
and even count to ten.  
And in our hearts we all believe,  
Hermanus is our home.  
And in our hearts we all believe,  
Hermanus is our home.

Hier in Hermanus staan 'n skool,  
waar ons kan speel en werk.  
Die beste skool in Overberg,  
met liefde sonder perk.  
Ons dans en sing en verf en spring  
en tel ook tot by tien.  
En in ons harte glo ons so,  
Hermanus Pre-Primêr bo.  
En in ons harte glo ons so,  
Hermanus Pre-Primêr bo.

# School hours

**Mondays to Fridays:**

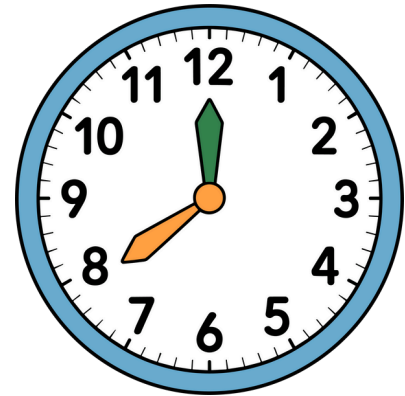
**1-2 years: 07:30 - 12:00**

**2-3 years: 07:30 - 12:00**

**Grade RRR: 07:30 - 12:00**

**Grade RR: 07:30 - 12:45**

**Grade R: 07:30 - 12:45**



On the last day of the term, the school closes at 10:30 for all learners

**AFTERCARE STARTS FROM 12:00/12:45 - 17:30**

You are required to sign your child out when you fetch them. No child may leave the premises without being signed out. If your child goes home with a taxi driver or lift club, make sure that the responsible adult knows about this rule. Please include a photo of your taxi driver to the Information Form. If for any reason you are sending someone, who is not on the list, to collect your child, you must please inform the school or class teacher of this beforehand via text message or WhatsApp. No siblings (scholars) may sign children out.

Please note that no learner may be dropped off before 07:15 and collected after 13:15 from school. Learners who have not been picked up by 13:15 will join the aftercare group, and the applicable fee will be added to your account.



# School calendar

We follow the WCED school calendar.

<b>TERM 1 - 2026</b>	<b>14 January -27 March</b>
<b>PUBLIC HOLIDAYS</b>	<b>21 March - Human Rights Day 3 April - Good Friday 6 April - Family Day</b>
<b>SCHOOL HOLIDAY</b> (Aftercare will be open)	<b>30 March - 7 April</b>
<b>TERM 2 - 2026</b>	<b>8 April - 26 June</b>
<b>PUBLIC HOLIDAYS</b>	<b>27 April - Freedom Day 1 May - Workers' Day 15 June - Special School Holiday (Aftercare will be open) 16 June - Youth Day</b>
<b>SCHOOL HOLIDAY</b> (Aftercare will be open)	<b>1 July - 20 July</b>
<b>TERM 3 - 2026</b>	<b>21 July - 23 September</b>
<b>PUBLIC HOLIDAYS</b>	<b>9 August - National Women's Day 10 August - Public Holiday 24 September - Heritage Day</b>
<b>SCHOOL HOLIDAY</b> (Aftercare will be open)	<b>25 September - 5 October</b>
<b>TERM 4 - 2026</b>	<b>6 October - 9 December</b>
<b>PUBLIC HOLIDAYS</b>	<b>16 December - Day of Reconciliation 25 December - Christmas Day 26 December -Day of Goodwill</b>
<b>SCHOOL HOLIDAY</b> (Aftercare will be open)	<b>10 December - 13 January 2027</b> Aftercare will be open from 10 - 23 December 2026 and 4 - 12 January 2027
<b>TERM 1 - 2027</b>	<b>SCHOOL STARTS WEDNESDAY, 13 JANUARY 2027</b>

# Communication

## WhatsApp



We use WhatsApp groups to share important information and updates. Our “Hermanus Pre-Primary School Community” group includes all the different grade groups, helping us stay connected and informed as one school community. Each class will have its own dedicated WhatsApp group, which can be joined by scanning the class-specific QR code provided.



## D6 Connect

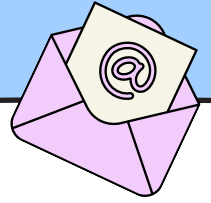
The D6 Communicator is a convenient communication platform used by the school to keep parents informed and up to date. Through the D6 Connect, you will receive important school announcements, reminders, newsletters, event notifications, and other relevant information—all in one easily accessible place. Learner’s school and aftercare fees can be paid via the D6 Connect app. Parents are encouraged to download the D6 Communicator app on their smartphones or access it via a computer.

## Karri App



The Karri app is a safe, quick, and convenient way for parents to make school payments – without sending cash to school. It allows you to pay for tuckshop, orders related to school events, sandwiches, fundraisers, and other school activities directly from your phone.

# Contact details



<b>PRINCIPAL</b>	<b>Mrs Michelle Swart</b>	<b>principal@hermanuspreprim.co.za</b>
<b>FINANCIAL ADMINISTRATOR</b>	<b>Ms Rozanne Yeoman</b>	<b>office@hermanuspreprim.co.za</b>
<b>RECEPTION SECRETARY</b>	<b>Mrs Gwen Nepgen</b>	<b>info@hermanuspreprim.co.za</b>
<b>FINANCE MANAGER</b>	<b>Mrs Toinette du Toit</b>	<b>accounts@hermanuspreprim.co.za</b>

# Banking details



<b>ACCOUNT NAME</b>	<b>Hermanus Pre-Primary NPC</b>
<b>BANK</b>	<b>First National Bank</b>
<b>BRANCH CODE</b>	<b>250 655</b>
<b>ACCOUNT NUMBER</b>	<b>629 331 198 95</b>
<b>REFERENCE</b>	<b>Child's name and surname</b>

# Fees 2026

## SCHOOL

School Fees - R2570	Gate tag - R90
Tuckshop - R60 per term Fridays only.	<u>Toasted Sandwiches:</u> Cheese - R15 Cheese and Tomato - R20 Cheese, Tomato and Onion - R20 Cheese and Salami - R25
Aftercare lunch - R30	Mineral water - R10

## AFTERCARE

Pre-Primary Learners - R1850	(HPS) Primary School Learners - R2075
Day visitors (school term) - R190	Day visitors (holiday) - R360
Gate tag - R90	Bus Fee - Included in fees

**Fees are payable on D6 Connect, EFT or at the office**



# Medication



All medication sent to school must be accompanied by a signed permission letter from a parent or guardian. The letter should clearly state the following:

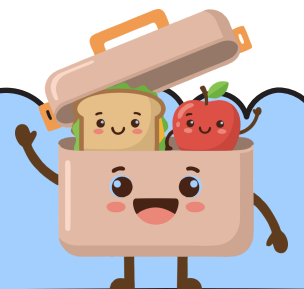
- Parent's name
- Learner's name
- Teacher's name
- Date(s) the medication should be administered
- Name of the medication
- Dosage amount
- Time the medication should be administered

# Clothing



- Please ensure your child is dressed comfortably each day, as our daily activities include play and outdoor exploration. Clothing may get a little messy or dirty as children learn through hands-on experiences.
- Pack in additional sets of clothing and underwear in case of mishaps/accidents or water activities.
- Mark all your child's clothes and shoes. It makes it easier to find when they do occasionally misplace them.
- Please ensure your child has a hat in their bag and sunscreen is applied daily before school. We encourage sun-safe habits, especially during outdoor play and activities.
- Girls must wear shorts underneath their dresses and skirts.

# Lunch boxes



Please ensure your child brings a healthy snack each day in a clearly labeled lunch box. A bottle of water or juice is sufficient to accompany their snack. To promote healthy eating habits, no fizzy drinks, energy drinks, or sweets are allowed at school. Coke and other soft drinks will not be allowed.

# Rules



- No toys are allowed at school unless it is a designated Show-and-Tell day. Toys often lead to misunderstandings and unnecessary tears, which can easily be avoided.
- Please ensure that both entrance gates are closed securely behind you.
- No child is allowed to hang or stand on the gate while it is being opened or closed.
- Children may not be left unsupervised on the playground during drop-off or pick-up times.
- All learners and parents must leave the playgrounds by 13:15, as aftercare learners use these areas from that time onward.
- Food brought from home may not be heated in the school kitchen.
- Learners may not come to school dressed in fantasy costumes (e.g., Spiderman). Such attire can be distracting during formal learning time.
- High-heeled shoes are not permitted, as they can affect posture and proper foot development. Learners should wear comfortable shoes suitable for running, climbing, and active play.
- Please encourage your child to use polite and appropriate language both at home and school. For example: “May I please be excused/go to the bathroom?”
- Reinforce the importance of good hygiene habits in the bathroom at home and school.
- Continue to promote respect, responsibility, and good manners in your child’s daily interactions.

# Discipline



Our school’s discipline is built on the principles of respect, responsibility, and positive reinforcement. We believe that children learn best in a safe, supportive, and encouraging environment, where good behaviour is recognized and celebrated. Positive reinforcement plays a key role in our approach. Good behaviour, effort, and kindness are acknowledged through praise, reward systems, certificates, class incentives, and verbal recognition. This encourages learners to continue demonstrating expected behaviour, respect, cooperation, and perseverance.

**Dear Preschool Friends and Families,**

**Welcome to Hermanus Pre-Primary School, a place where learning begins with laughter, curiosity, and care. Our preschool is a warm and nurturing environment where every child is encouraged to explore, create, and grow at their own pace.**

**We believe that early childhood is a time of wonder and discovery. Through play, imagination, and hands-on experiences, children build the foundations for a lifelong love of learning. Our dedicated teachers work closely with families to support each child's social, emotional, and academic development in a safe and joyful setting.**

**To our parents and guardians, thank you for being our partners in this important journey. Together, we create a community that values kindness, respect, and the unique potential within every child.**

**We're delighted to have you as part of our preschool family – where every day brings new adventures, friendships, and opportunities to grow.**

**With warmest regards,  
Michelle Swart  
Principal**